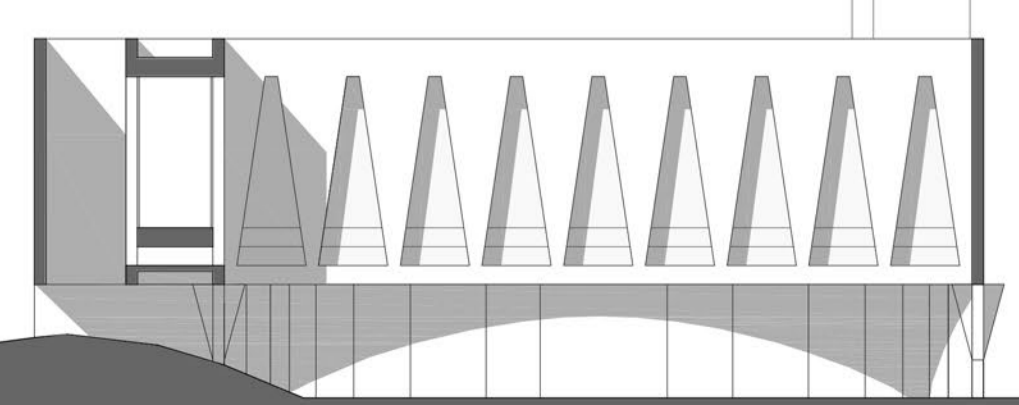


- 1 hall 450 mq
- 2 bar reception 40 mq
- 3 servizi igienici 30 mq
- 4 collegamenti verticali 35 mq
- 5 casa del custode 65 mq
- 6 guardiola 15 mq
- 17 vani tecnici impianti
- 18 piazza delle feste

STONE CITY

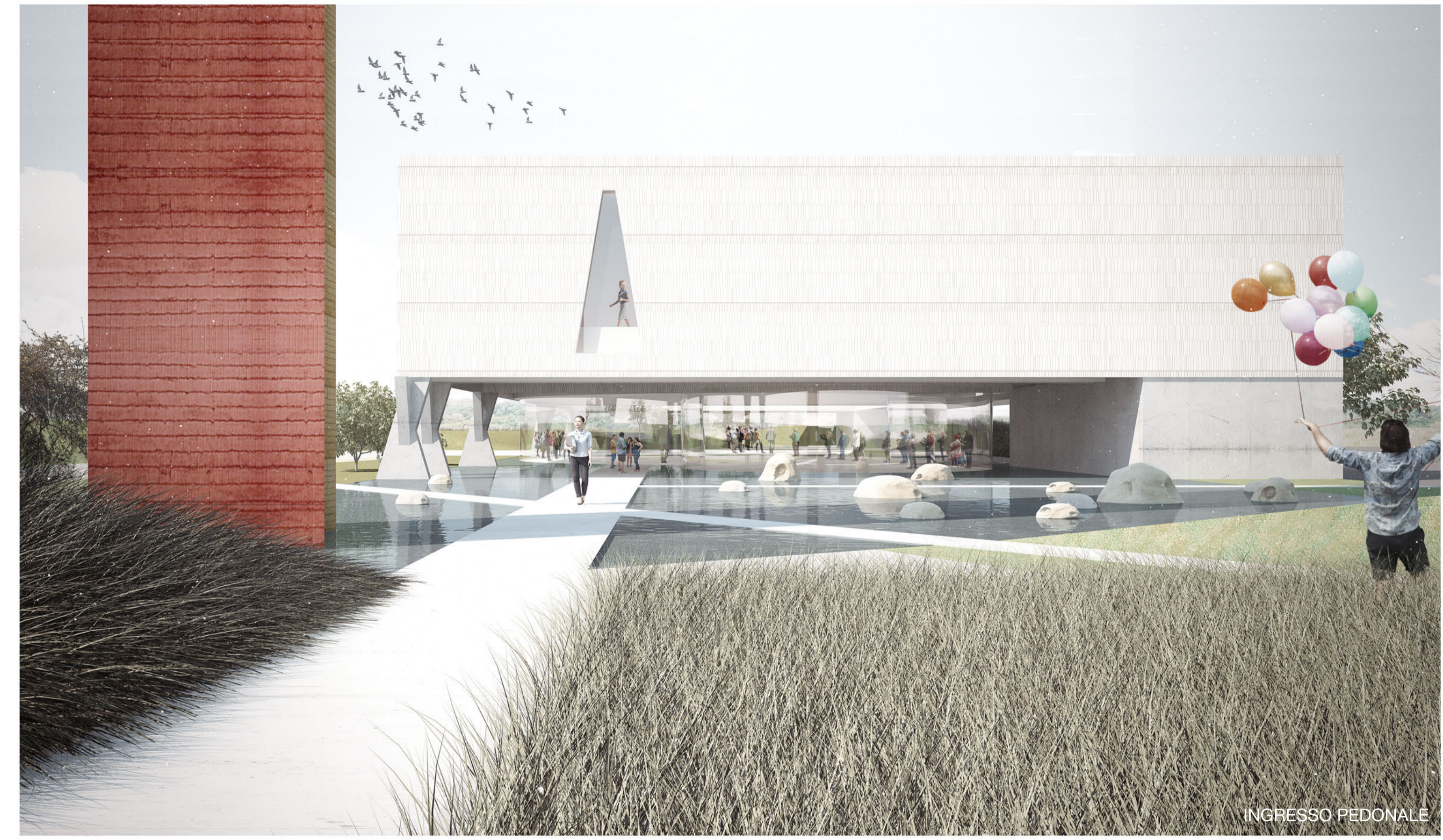
PIANTA PIANO TERRA



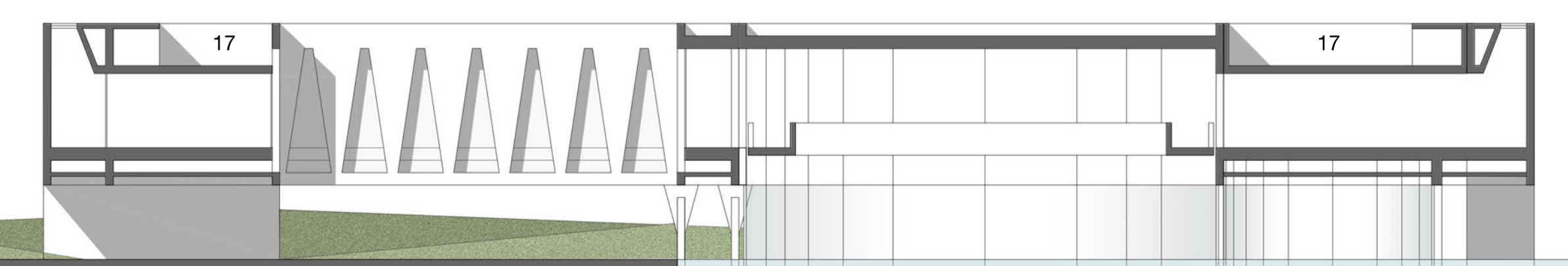
SEZIONE AA



VISTA DAL CAVALCAVIA



INGRESSO PEDONALE



SEZIONE BB